

EAST VIEW
STUDIO

Your best friend in their best light

Bespoke Needle-Felted Portraits



Ordering Guide

karen@eastviewstudio.co.uk

Contents

1. Introduction
2. The process
3. Taking or selecting the 'best' photograph
4. Backing fabric
5. Framing options
6. Pricing
7. How to get in touch



Introduction

My needle-felted portraits are a delightful way to display the love you have for your dog or a perfect memorial of the life you shared together.

I have been needle-felting portraits for a number of years and my work is displayed in homes across the UK, in Europe and in the US.



Each piece is lovingly handcrafted from wool, using a special barbed needle to fix the fibres together, creating a truly captivating representation of your best friend.

Largely self-taught, I have additionally undertaken tuition from some of the most acclaimed international needle-felt artists in order to further refine my own style.



The Process

I'm thrilled that you are considering a needle-felted portrait and have created this guide to let you know how I work and what to expect when you commission a portrait from me.

It should include everything you need to know, but don't hesitate to contact me if you need any further information.



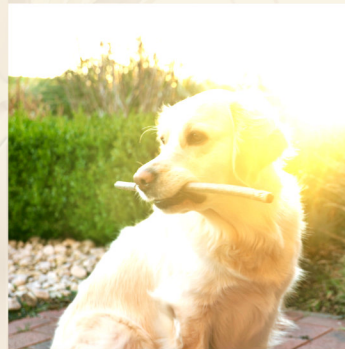
1. We'll work together to choose the very best photograph for your portrait
2. Choose your backing fabric
3. Choose your frame
4. I'll create a mock-up of your portrait, so you can check that you are happy with the choices you have made and the composition
5. When approved, I'll let you know when I will be able to start work on your portrait. Payment is required to secure the time in my schedule.
6. On the agreed date I'll start working on your portrait. I'll keep in close contact during the creation so you can see how it is progressing.
7. Once complete, but before framing, you will have a final opportunity to request any adjustments
8. Your portrait will be framed, securely packaged and sent to you

Photographs

It is easier to create a portrait that captures all of the details that you love so much when working from a good quality reference image, but what makes an ideal reference image?

Lighting

Photographs taken outdoors on a bright but slightly overcast day look best. Face your dog towards the light, so the light catches in their eyes. Photographs taken indoors with your dog facing the window can also work well.



Too Bright



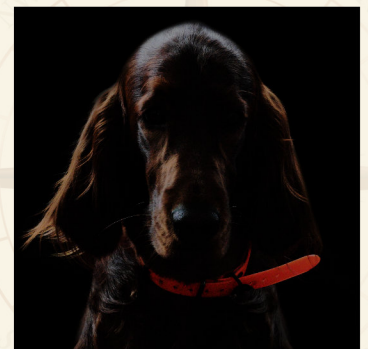
Directional Light

Avoid images with harsh, directional sunlight.

Artificial lighting can effect coat colour and flashes can make the eyes reflect - avoid if you can.



Artificial Light

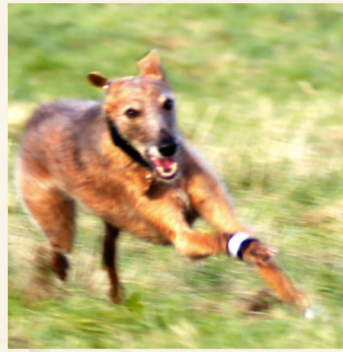


Too Dark

If the picture is too dark or too bright some details may be lost.

Focus

Ideal photographs are in focus from the end of the dog's nose to the tips of their ears.



Motion Blur



Shallow Depth of Field

Blurry images are often caused by using an aperture which is too wide (causing a narrow depth of field) or by trying to photograph a moving subject.

The dog should be close to the camera so as much detail as possible is captured, but not too close!



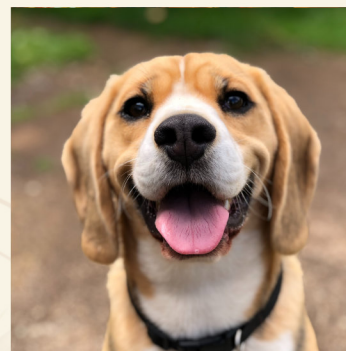
Too Far Away



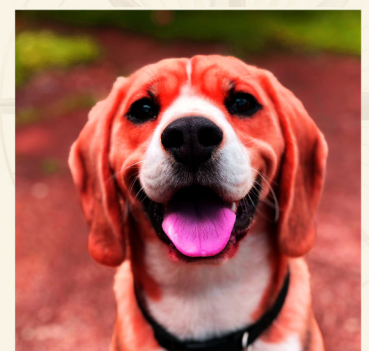
Too Close

Editing

I would advise against editing your photographs or applying a filter to them as this can effect the colour of your dogs coat, resulting in an unrealistic portrait.



Unedited Image



Edited Image

Shooting Tips

Grab your camera or phone, grab your dog and take lots of pictures - the more you take, the more you have to choose from.

Try taking pictures from different angles to see what you like. Get down low to take them at your dog's eye level, take them from above with them looking up at you, try for a few profile shots. Most importantly, try to capture the essence of your dog!

Squeakers, balls and treats are excellent for getting your dogs attention. Photographing your dog should be fun for both of you, so if your dog isn't in the mood then put your camera away for another day!



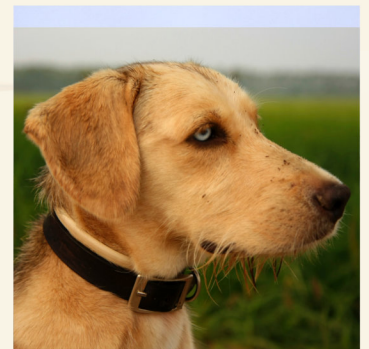
Playing



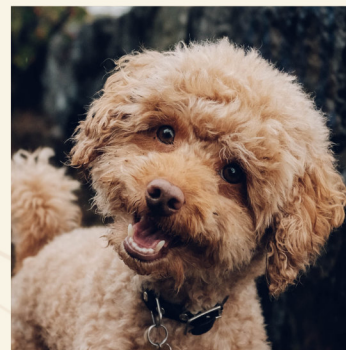
Happy



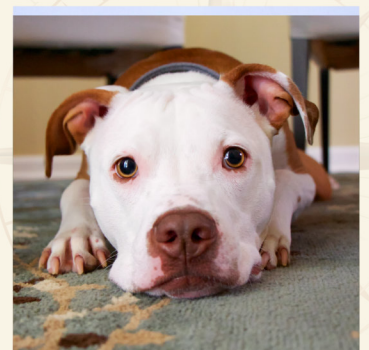
Looking Up



Profile



Interested



Relaxed

Memorials and Gifts

I understand that it's not always possible to take new photographs, whether this is because you are looking for a memorial portrait of a beloved dog who has passed or if you are purchasing a portrait as a gift.

For gifts, you may want to consider a Gift Certificate, so the recipient can take or select a photograph.

I am still able to produce a beautiful portrait from less than ideal photographs, so please do email me with the pictures you have and I will advise accordingly.

Copyright

I respect other artists, therefore if you would like to use a photograph that has been taken by a professional photographer I will need their written permission to create derivative works from the image they have taken.

Backing Fabrics

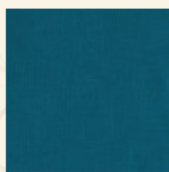
I use only the highest quality natural linen fabrics as the backing for my portraits, sourced from a specialist supplier here in the UK. The look of linen is unique and beautifully complements my needle-felted artwork.

I offer you the choice from a wide colour range, so you can match your artwork to the decor and ambience of your home.

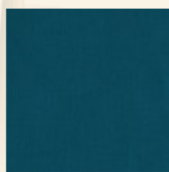
Please note that colours are displayed dependent on your monitor/device settings. Please request samples if desired. All colours are subject to availability.

Classic Collection

A medium weight linen, available in a stunning range of colours. Choose bright colours for a contemporary statement piece and muted or neutral colours for a timeless look.



Aquamarine



Blue Shadow



Cobalt



Electric



Deep Red



Fuchsia



Hot Pink



Yellow



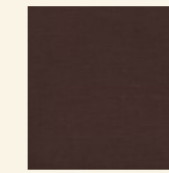
Black



Blue Mist



Caramel



Chocolate



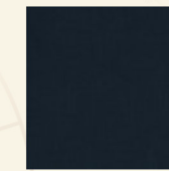
Dijon



Duck Egg



Green Mist



Ink



Ivy



Lavender



Lime



Olive



Pearl



Pebble



Pine



Plum



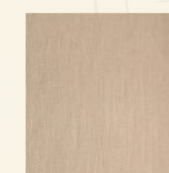
Sea Grey



Stone



Shadow Grey



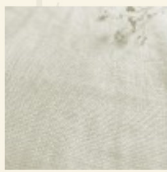
Rose Fog

Pure White and Natural White also available

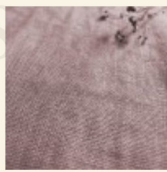
karen@eastviewstudio.co.uk

Premier Collection

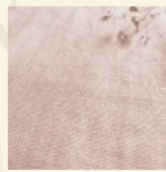
A premium heavy weight linen, available in a delicious muted colour palette. Beautifully textured, with a delightful subtle sheen.



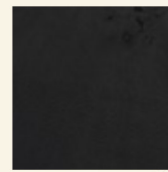
Oyster



Orchid



Rose Fog



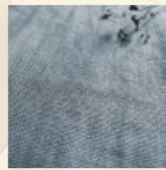
Noir



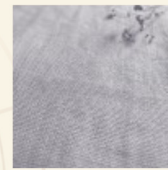
Concrete



Off White



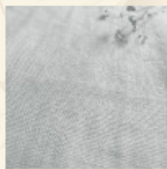
Frosted Denim



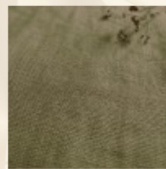
Grau



Winter Fog



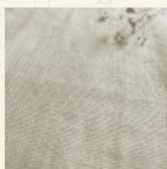
Pearl



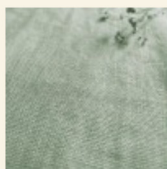
Khaki



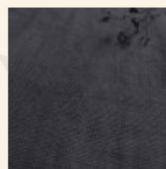
*Natural**



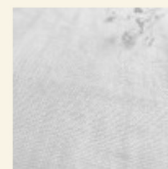
Oatmeal



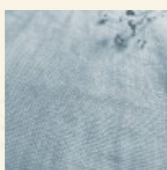
Pistachio



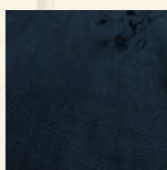
Chocolate



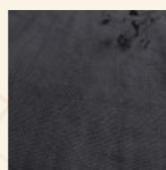
White



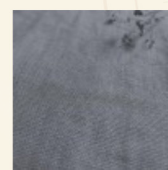
Hazy Sky



Midnight



Shadow Grey



Lead Grey

**Natural does not have a sheen*

Framing Options

All of my artwork is delivered framed and ready to display. I offer the following options.

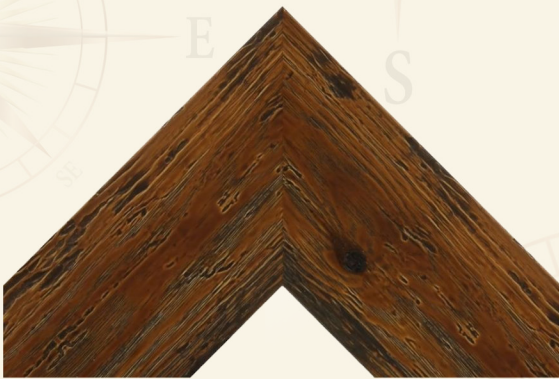
Classic Collection

A deep square frame in either black or white, deliberately simple so as not to detract from the beauty of your dog.

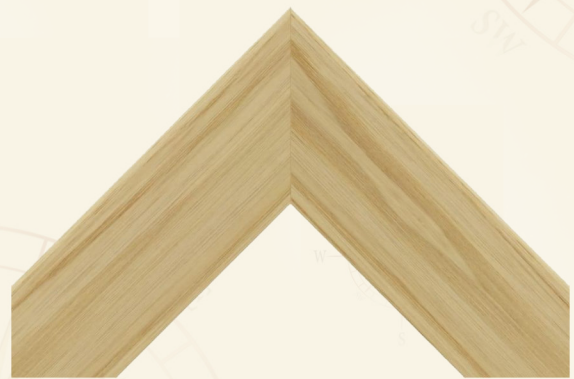


Premier Collection

A range of hand made frames, especially chosen to enhance your artwork.



85mm Rustic Wood



57mm Flat Ash



75mm Floral Bronze



95mm Gunmetal Verona



80mm Art Deco Black



80mm Art Deco Cream

Please let me know if you are looking for a particular style and I'll get in touch with my framers

karen@eastviewstudio.co.uk

Pricing

Premier Collection

A truly bespoke product and service, tailored to meet your exact requirements. Artwork is delivered to you in a hand made frame with a custom cut double mount to showcase your dog portrait.

We'll work together to :

- Choose your photograph
- Choose the size of your artwork (from 40cm² to 70cm²)
- Choose **any** backing fabric
- Choose your frame
- Choose your passe-partout
- Design any hand-embroidered personalisation

Price: from **£585**

Classic Collection

A beautiful portrait, handcrafted just for you and delivered framed and ready to display in your home. Suitable for one subject only.

We'll work together to :

- Choose your photograph
- Choose the size of your artwork (20cm² or 30cm²)
- Choose your backing fabric from the Classic Collection
- Choose either black or white Classic Collection frame

Mini



20cm² portrait
£325

Standard



30cm² portrait
£395

How to Get in Touch

Thank you for taking the time to read my guide. You can contact me if you need any more information or to enquire about having a beautiful custom made portrait of your own dog.

Email: karen@eastviewstudio.co.uk

Telephone: 07445 699242

